

## CONTENTS

Inside front cover

**Church contacts**

Page 1

**Mottram Charities**

Page 2

**Mottram Charities**

(continued)

Page 3

**Notice Board**

Pastoral Team, Walk.

Page 4

**Notices Continued**

Trefoil Guild

First Steps

Page 5

**Notice**

Friends of Mottram

Church - Garden Party

Page 6

**Two More Notices**

Food Bank, Stamps  
for Willow Wood.

Page 7

**Notice**

Champing Holidays

Page 8

**The Flower Rota**

**(Advertisements)**

Page 9

**Church News (1)**

Next PCC, Assistant  
Verger, Walk planning,  
Bells.

Page 10

**Church News (2)**

Churchyard nature.  
Quote of the month.

Page 11

**High Days and  
Holy Days**

Octavia Hill

Page 12

**A Wandering Eagle**

Page 13

**Church Services**

Page 14

**Let's Pray**

Page 15

**Registers &  
Records**

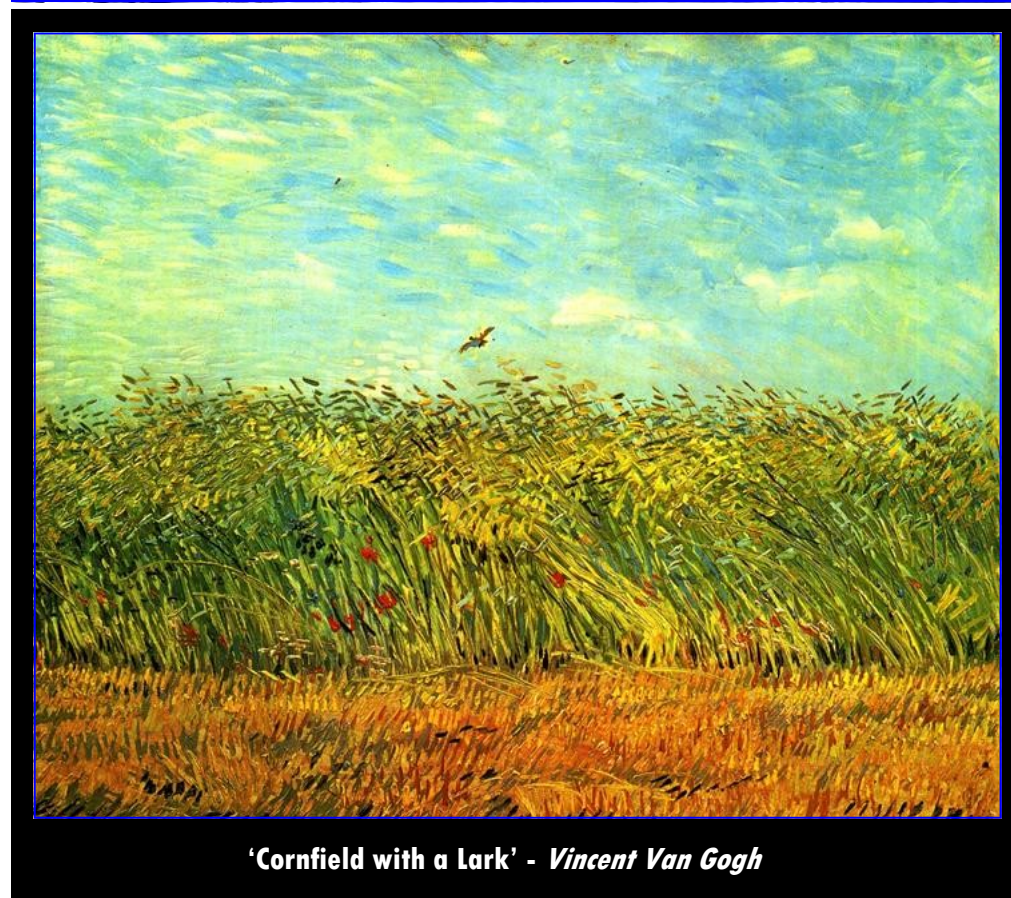
Page 16

**Cartoon**

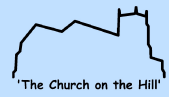
Page 17

**Community  
contacts**

# Mottram Parish Magazine



*'Cornfield with a Lark' - Vincent Van Gogh*



For more information about ways to help with the finances of the church, for instance:

- Giving by standing order.
- Remembering the church in your will.
- Joining our finance team.

Please speak to one of our churchwardens.



We now have a collection during the service again. There is also a card-reader and a collection basket at the back of church or you can donate by BACS.



*The Collection Basket*

*The contactless cardreader*

Our Parish Safeguarding Coordinator is:  
**Claire Bibby 01457 763758**

If you are worried about a particular person or situation in connection with any church activity, ring Claire, or you can use a safe email address to report it; this email is checked daily, and can be accessed only by Claire.  
Contact: **safemottram@gmail.com**



*Printed on 100% recycled paper*

**We aim to be**  
~ a growing fellowship of believers ~  
warm in welcome ~ reverent in worship ~ gracious in witness  
and joyfully serving God and our community ~

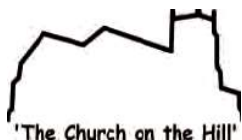
 [www.mottramparish.org.uk](http://www.mottramparish.org.uk)  Mottram Parish  @mottramparish

**August 2024**

(Contents - see back cover)

**Price 70p**  
or download or read online at  
[www.mottramparish.org.uk](http://www.mottramparish.org.uk)

# Mottram Parish



Vicar:

vicar@mottramparish.org.uk

[www.mottramparish.org.uk](http://www.mottramparish.org.uk)

the Church of England in Mottram Parish, serving the communities of Mottram, Broadbottom and Hattersley East together "seeking to know Christ and to make Christ known"

**OUR MAIN SUNDAY WORSHIP IS AT 10.30am** (see p 11)

St. Michael & All Angels, Warhill, via Church Brow, Mottram, SK14 6JL

## USEFUL CHURCH CONTACTS IN MOTTRAM PARISH

### Churchwardens

**Bob Joy** 07546 251709  
**Kevin Hall** 07801 091023

### Readers

**Allen Standeven** (Emeritus)  
01457 857331

### PCC Secretary

**Kate Best** 01457 857248

### PCC Treasurer

treasurer@mottramparish.org.uk

### Parish Administrator

**Juliet Edwards**  
07828931445

### Prayer Group Contact

**Tony Kershaw** 01457 765350  
prayer@mottramparish.org.uk

### Children and Families Missioner

**Louise Britton** 07721 419866  
louisebritton@mottramparish.org.uk

### Mental Health First Aiders

**Louise Britton** 07721 419866  
**Maggie Flint** 07801600637

### First Steps Baby & Toddler Group

**Pat Hall** 01457 861827

email: use the person's name - eg: [pollybrown@mottramparish.org.uk](mailto:pollybrown@mottramparish.org.uk)

### Baptism Coordinators

**Cathy Laycock** 07971 479903  
**Pat Hall** 01457 861827

### Wedding Administrator

**Jackie Kneen** 07949 874165

### Pastoral Visiting Coordinators

**Christine Brandreth** 01457 238268  
**Christine Kershaw** 01457 765350  
pastoral@mottramparish.org.uk

### Safeguarding Coordinator

**Claire Bibby** 01457 763758  
secure email: [safemottram@gmail.com](mailto:safemottram@gmail.com)

### Organist

**Matt Harrison**  
[mattharrison@mottramparish.org.uk](mailto:mattharrison@mottramparish.org.uk)

### Friends of Mottram Parish Church

**Christine Kershaw** 01457 765350

### Holy Dusters

**Jackie Smith** 07791 517468  
**Chris Kershaw** 01457 765350

### Bellringers' Tower Captain

**Chris Broadley**  
Please contact editor (see below) in the first instance.

## MAGAZINE CONTACTS

Editor: Polly Brown 01457 865278 [mandpbrown@protonmail.com](mailto:mandpbrown@protonmail.com)

Subscriptions: [magsubs@mottramparish.org.uk](mailto:magsubs@mottramparish.org.uk)

## COMMUNITY CONTACTS IN MOTTRAM PARISH

### **Mottram Primary School**

01457 763368  
[admin@mottram.tameside.sch.uk](mailto:admin@mottram.tameside.sch.uk)

### **Broadbottom Primary School**

01457 762382  
[admin@broadbottom.tameside.sch.uk](mailto:admin@broadbottom.tameside.sch.uk)

### **Arundale Primary School**

01457 762328  
[admin@arundale.tameside.sch.uk](mailto:admin@arundale.tameside.sch.uk)

### **Broadbottom Pre-school**

01457 764423

### **Broadbottom Brownies**

07884 006484

### **Broadbottom & Mottram**

**Beavers, Cubs and Scouts**  
07912 387358

**Police - in emergency dial 999**  
**Non-emergency - dial 101**

**Longdendale Neighbourhood Police**  
0161 856 9484

**Tameside Police**  
0161 872 5050

### **Longdendale Councillors**

**Gary Ferguson** 07842 297520  
**Jaqueline North** 07517 680211  
**Jaqueline Owen** 07891 138943

### **Member of Parliament**

**Jonathan Reynolds MP** 0161 367 8077  
[jonathan.reynolds.mp@parliament.uk](mailto:jonathan.reynolds.mp@parliament.uk)

### **Tameside Local Studies & Archives**

0161 342 4242  
**Hattersley Library, in the Hub**  
0161 342 2552

## Tameside South & Longdendale Foodbank

*Here in the hard times*

St Barnabas Church  
Hattersley Road East  
Hattersley SK14 3EQ  
9.00 - 11.00am



*We operate on a referral system*

Please speak to/email/phone Louise:  
[cfm@mottramparish.org.uk](mailto:cfm@mottramparish.org.uk)  
or ring 07721419866

## MOTTRAM COMMUNITY CENTRE

Church Brow, Mottram

- Two large halls and stage • kitchen
- soft outdoor play area

Great for children's parties, meetings, etc.  
To book:  
Ring 01457 763504  
(call screening in operation - please be patient)  
or email  
[sarahdavies.006@gmail.com](mailto:sarahdavies.006@gmail.com)

## The Magdalene Centre

Available for hire  
see page 12

Mottram Road, Broadbottom  
SK14 6BB

Phone 07828 931 445

or email

[julietedwards@mottramparish.org.uk](mailto:julietedwards@mottramparish.org.uk)

## ETHEROW CENTRE BROADBOTTOM

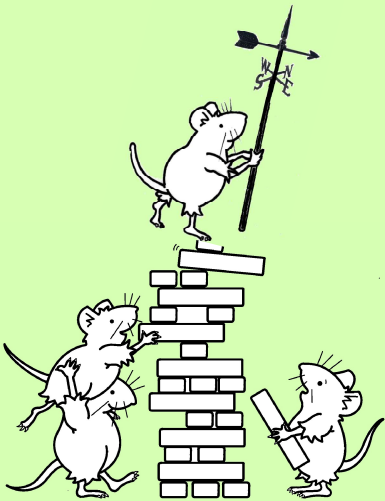
*Providing sport and leisure activities  
for people with disabilities.*

**Our large indoor arena is for hire.**

contacts: Ted Bussell  
[edward.bussell@btinternet.com](mailto:edward.bussell@btinternet.com)  
and Gwyn Davies  
[davies.gwyn@aol.com](mailto:davies.gwyn@aol.com)



## Not To Be Taken Seriously



## Mottram Parish Charities

### The ancient gifts that keep on giving!

If you have visited the Parish Church you may have noticed the two bread shelves hanging on the wall either side of the door, near the coffee corner. These are inscribed with the names of Margaret and Elizabeth Booth, who were related, but lived almost 100 years apart. The shelves were once located in the porch, supplied regularly with loaves, to be taken home unseen by poor parishioners. Another prominent feature in the coffee corner is the Benefactors board, which records the names of people who long ago gave money to the church to support its buildings and worship, or its charitable work.



Over time, the money which had been given by those wealthy donors long ago was invested by purchasing land, to produce a regular income. A receipt book kept in the charity's records shows these rentals from local parcels of land being collected as recently as 1969:

Jessop's Fold Farm, Honley, Huddersfield	£2. 12s
Thorncliffe Hall, Hollingworth	£2
Calico Printers Association, Manchester (re Chadkirk Printworks)	£2
Hollingworth Cricket Club	4s
Thorncliffe Wood, Hollingworth	3s
Thorncliffe Barn Farm, Hollingworth	£2
Vale Farm, Hollingworth	8s 6d

There were a number of other small charities with similar aims (for instance Edward Chapman's 'Mottram Sick and Poor Fund') and over the years those charities have been amalgamated and are now subject to Charity Commission regulation under the heading of Mottram Parish Charities. Those original gifts which seem so small to us, have been wisely invested and a sum of over £30,000 is now kept in a Charities Ethical Investment fund which produces an annual income of almost £1,000 per year. This is available to be spent by the trustees, leaving the capital sum untouched to carry on the work in the future.



# Let's Pray



## Parish Prayer Rota August 2024

Month by month, we invite you to pray with us for all the residents of the parish, asking for God's blessing or healing touch wherever it is needed.

Bostock Road  
Lymefield Terrace  
Temperance Street  
Old Street  
Olive Terrace  
St Ann's Street  
Well Row  
Mill Brow  
Market Street  
King Street

*Love your neighbour  
as yourself'*



Dear Jesus

When we pray for Your help and blessing, we remember the words, "be still in the presence of the Lord". Fill us with the peace of mind and serenity which only You can give, and restore us once again. May we remain safe and content, knowing Your peace will continue to dwell in us.

*By Terence Trimmer*

A prayer for modern slaves:

We pray for those who are being trafficked and forcibly put to work. Lord in your mercy, hear our prayer.

## Prayer Requests

Our regular prayer group's next 'virtual' meeting in our cyber prayer room is Monday 19<sup>th</sup> August 7.30 - 8.30pm

Let us know what's on your mind, for yourself, those you love, or for the world. Reply to our regular Facebook post and we'll include it in our prayers.

If you would like to ask for a prayer - in complete confidence - email your request to [prayer@mottramparish.org.uk](mailto:prayer@mottramparish.org.uk)

or contact Tony Kershaw by phone, text, email, Whatsapp or Messenger.

[tonykershaw@mottramparish.org.uk](mailto:tonykershaw@mottramparish.org.uk)  
tel. 01457 765350

*We don't always get the answer we expect or want, but it's always good to share with God. He shared with us on the cross.*

## The Secret of Living

The secret of living  
Is learning to pray –  
It's asking our Father  
For strength for the day.

It's trusting completely  
That His boundless grace  
Will overcome care  
And each problem we face.

It's walking by Faith  
Every mile that we plod  
And knowing our prayers  
Bring us closer to God.

*Anon*

# NOTICE BOARD

## Community Groups and Charities

**You can make use of our notice boards - it's free!**

Send your notice to the editor at [mandpbrown@protonmail.com](mailto:mandpbrown@protonmail.com)

**Deadline for the August issue is Tuesday 30 August.**

The magazine should be in church and online by Sunday 4 August.

## A request from the pastoral team.

We visit the sick, the bereaved and the housebound, but unfortunately sometimes we do not know that someone is ill or in hospital. If you know of a congregation member who is ill or has been taken into hospital please could you inform one of us, either at church on Sunday morning or by telephone.

Christine Brandreth 01457 238268

Chris Kershaw 01457 765350

## NEXT CHURCH WALK

**We car share so can offer a lift to non-drivers.  
Everyone welcome (not just church goers!)  
Saturday, 10 August 10:30am – 4:00pm  
Lyme Park**

**Led by Mark 07849 172288**

**Please come prepared for all weathers  
with appropriate clothing, suitable footwear  
and a packed lunch.**

**We collect a voluntary donation of £1 per  
walk in aid of a chosen charity.**

**Planning meeting - see Church News p. 9**



## NOTICES CONTINUED



The next meeting of the **Trefoil Guild** will be on Tuesday 17 September at 1.30pm in the Community Centre.

There is a change of programme to an Escape Room experience!



### First Steps Baby & Toddler Group

We had a lovely last session of the year up at the Old Mill Farm, with baby goats and bunnies, alpacas and sheep to see and lots of lovely toys to play with.

It was time to say goodbye to Ewan and Evelyn as they are off to school in September. We have loved having them with us and send them off with lots of love.

**We are having a pop-up session on Monday 12 August 10 - 11.30am at Mottram Community Centre, Church Brow SK14 6JJ.**

The new term begins on **Monday 2 September 10-11.30am** at Mottram Community Centre, Church Brow.

For more information contact Pat Hall on 01457 861827

or Pat Hall and Charmian Wilby at [www.mottramparish.org.uk/intouch/contact/pat](http://www.mottramparish.org.uk/intouch/contact/pat)

Or just turn up on the day!



## Church Services



### St Michael and All Angels, Warhill, Mottram

**Early Communion, using the Book of Common Prayer, takes place every Sunday at 9.15am.**

**Our main Sunday worship is at 10.30am.**

**Sunday 4 August**

**10<sup>th</sup> after Trinity**

9.15am Early Communion

10.30am Holy Communion

**Sunday 11 August**

**11<sup>th</sup> after Trinity**

9.15am Early Communion

10.30am Morning Prayer

**Sunday 18 August**

**12<sup>th</sup> after Trinity**

9.15am Early Communion

10.30am Family Communion

**Sunday 25 August**

**13<sup>th</sup> after Trinity**

9.15am Early Communion

10.30am Holy Communion

**Sunday 1 September**

**14<sup>th</sup> after Trinity**

9.15am Early Communion

10.30am Holy Communion

*Visitors who regularly take communion in their home church are welcome to join us at the table.*

### St Barnabas, Hattersley

**Every Wednesday 10.30am**

**Holy Communion**

A joint service with our friends and neighbours at St Barnabas Church, Hattersley Road East, Hattersley, SK14 3EQ.



**St Michael and All Angels website is at  
[www.mottramparish.org.uk](http://www.mottramparish.org.uk)**

## A Homing Eagle



A brass eagle lectern that was stolen from a Birmingham church in June was mysteriously returned just a week later.

The Reverend Matthew Tomlinson,

vicar at St Augustine's, said their church warden received a call from a member of the public who had spotted the heavyweight bird looking remarkably out-of-place in a scrap yard in the Black Country.

"There had been so much publicity about it, people would have been aware of what it was and it would have been very difficult to dispose of," said Mr Tomlinson.

Mr Tomlinson said he was overjoyed at the eagle's surprisingly speedy return, adding that the theft would not prevent him from opening the church.

"My feeling is, if the doors are open, more people come in and that's a good thing," he explained. "The vast majority of people are honest and do not steal from churches."

Stephen Hartland, churchwarden emeritus, said "The church has been open every day for the last 160 years and thankfully theft is a rare occurrence.

CCTV footage shows a man staggering slightly under the weight of the eagle as he carries it, wrapped in a blanket, out of the church.

A 61-year-old man is now being held in custody on suspicion of the theft of a brass eagle from a church lectern.

The church has installed a motion sensor and other measures to stop the bird taking flight in the future.

## NOTICE

### Friends of Mottram Church Annual Garden Party



**Thank you to all who worked so hard on our annual Garden Party in and around the church, and to all those who supported us.**

The weather treated us kindly, and we raised almost £700 to help preserve our beautiful medieval building.

There was tea and coffee, and cold drinks and cakes - lots of extremely tempting cakes. In fact the supply of cakes was so generous that the congregation had a lovely time finishing the remainders on the Sunday morning.

There were raffles, tombola, some exquisite jewellery and crafts and a pile-'em-high-and sell-'em-cheap book stall.

In an interesting bit of role-reversal one of the customers (Mr K. Hall) actually managed to flog one of the books to the assistant stall-holder (thanks Kevin, it's very good).

A few copies are still available of the WWII recipe book; a facsimile of an original which Catherine discovered among her late mother's effects. 'Kitchen Parade' costs just £2. It's in the Tea Corner.

Five people went up to the ringing room, and had a go at chiming a bell that was safely 'down'. They then climbed bravely up to the belfry to hear number 6 rung, courtesy of Ben. Next time perhaps we should supply ear-plugs.

All-in-all it was a most enjoyable, interesting and very successful day. **So thanks again everyone!**

## TWO MORE NOTICES

### The Food Bank needs:

Tinned meat Tinned fish

Tinned fruit Tinned veg.

Milk (UHT or powdered) Cereal

Cooking sauces Noodles Jam Long-life puddings

Fruit juice (long life) Toiletries and loo roll

**Bring your gifts to church and leave them in the box near the church door, or you can leave them in a box at Tesco's, Hattersley.**

**Pick up a leaflet in church for more information, or if you are able to contribute financially.**



### Used stamps for Willow Wood

Stamp-collecting is a hugely popular hobby worldwide. There is a ready market for used postage stamps and even our everyday 1st and 2nd class stamps are exotic collectables to young philatelists in other parts of the world.

Recycle your stamps to help raise vital funds for our local hospice.

They need:

Any stamps from your post by cutting or tearing off envelopes.

All British and foreign stamps including ordinary 1st and 2nd class.

No more than 1cm of envelope left around each stamp.

Not trimmed too close, in case the perforations get damaged.

Please put your used stamps in the box at the back of church  
(In the Tea Corner)

Many thanks.

Sarah Davies

Any questions, please contact Sarah: <sarahdavies.006@gmail.com>

## HIGH DAYS and HOLY DAYS

### 13<sup>th</sup> August - Octavia Hill, social reformer and co-founder of The National Trust

The urgent need for decent, affordable housing is a hot topic just now.

It was an even more urgent need in Victorian London, where the homes of the poor were tiny, cold, damp, and infested with lice and vermin. Water was from an outside pump, and filthy outdoor toilets were shared with dozens of neighbours. Labourers lived 22 years on average; more than half of all babies died before their first birthday.

Into this festering mess of disease and misery came Octavia Hill in 1852. She was determined to make a difference, and she did.

Her family in Wisbech, Cambs. were comfortably off but passionately interested in welfare. Her grandfather was a national authority on sanitation and housing. Her father, a corn merchant and banker, worked hard for prison reform. Her mother managed a Christian Socialist co-operative in London, where the young Octavia met John Ruskin, and other notable figures interested in social reform.

Once in London, Octavia began her first job, that of teaching poor children to make toys. It gave her grim first-hand experience of the horrors of life of the very poor.

By 1856 Octavia was helping run classes for women at the Working Men's College in Great Ormond Street, and she and her sisters also started a school for poor children.

But what most moved Octavia's heart was the housing crisis. By 1864, with the help and advice of John Ruskin, she had launched a business scheme for improving Victorian housing in London. Gradually her scheme and experience expanded, until a breakthrough came in 1884, when the Ecclesiastical Commissioners handed her a large part of their portfolio of properties to manage in Southwark.

It has been said of Octavia that her Christian faith made her seek "to make life on earth as positive an experience as possible, particularly for the poor and disadvantaged."

Today Octavia is remembered most for something surprisingly different; her initiative with Canon H D Rawnsley and Sir Robert Hunter to found the National Trust in 1895. It has become Britain's leading charity for preserving historic buildings and places of natural beauty.

Octavia's national fame never affected her – she lived quietly with her sisters in Marylebone Road until her death on 13<sup>th</sup> August 1912.



## CHURCH NEWS (2)

### Churches Count on Nature

It's an annual scheme where people record plant and animal species they encounter in churchyards. It is supported by environmental charities A Rocha UK and Caring for God's Acre, and by The Church of England and The Church in Wales.



The most interesting thing we have found so far in the churchyard is this Broad-leaved helleborine near the entrance to the Memorial Garden. It's a glum-looking little thing, but it is a wild orchid, it's one of the few things that will thrive and flower in deep shade, and nationally it's very local in its distribution.

*(Recording slips available at the back of church)*

### Quote of the Month

*Commenting on the fact that the world's richest person, Elon Musk, has just announced that he's a "big believer in the principles of Christianity" and "a cultural Christian", Simon McCarthy-Jones, Associate Professor in Clinical Psychology and Neuropsychology, Trinity College Dublin, remarked;*

**'Those playing with holy fire also risk being biblically burned.'**

**Matthew 19:16-26**



**It is easier for a camel to go through the eye of a needle**

## NOTICE



## Champing™

A unique opportunity to stay somewhere truly extraordinary!

Champing™ is the simple and unique concept of camping overnight in our beautiful historic churches. Hundreds of happy Champers have stayed overnight in these ancient spaces since the initiative was launched in 2015 and we continue to go from strength to strength.

Find out more, purchase gift vouchers, browse Champing™ sites and book online at <https://champing.co.uk/>

# Altar Flowers 2024

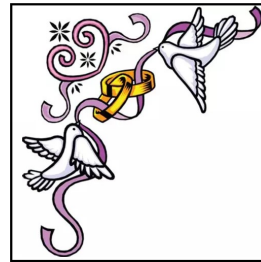
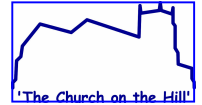


June 2nd	June 9th	June 16th	June 23rd	June 30th
Trinity 1	Trinity 2	Trinity 3	Trinity 4	Trinity 5
July 7th	July 14th	July 21st	July 28th	August 4th
Trinity 6	Trinity 7	Trinity 8	Trinity 9	Trinity 10
August 11th	August 18th	August 25th	September 1st	September 8th
Trinity 11	Trinity 12	Trinity 13	Trinity 14	Trinity 15
September 22nd	September 29th	October 6th	October 13th	October 20th
Trinity 16	Trinity 17	Trinity 18	Trinity 19	Trinity 20
October 27th	November 3rd	November 10th	November 17th	November 24th
Trinity 21	Trinity 22	Trinity 23	Trinity 24	Trinity 25
December 1st	December 8th	December 15th	December 22nd	December 29th
Trinity 26	Trinity 27	Trinity 28	Trinity 29	Trinity 30

If you wish to dedicate altar flowers in memory of a loved one please speak to Sue Joy or email flowers@mottram.org.uk or sign the list in the porch. There is also a collection basket at the back of church if you wish to donate.

## CHURCH NEWS (1)

The next PCC meeting will be on Tuesday 10 September at 7.30pm in the vestry.



### Wanted – an Assistant Verger for weddings.

Shirley is retiring and we need someone to take over.

You would have to turn up two hours before the service just to get things ready and check that everything is in place.

If you are willing to carry out this necessary and very enjoyable job please speak to Jackie Kneen (Wedding Administrator) on 07949 874165.

### Walk with the Walkers

Saturday, 24 August 1:00 – 3:00pm

A bring and share lunch and planning meeting at the home of Joan Walker.



### Bell Ringing



Mottram bells will be rung to a Quarter Peal on Thursday 15 August at 1.00pm.

Andrew Darling is bringing a band of ringers from East Branch and Mid Branch of the Chester Guild of Church Bellringers.

A Quarter Peal is 1260 changes and lasts about 45 minutes.

This will be the first Quarter Peal on the bells since 2017 and we wish the visitors success.



# KNEEN ELECTRICAL SERVICES

Call Chris on 07814 553837 or 01457 763809

Honest and reliable - complete rewires to a single plug

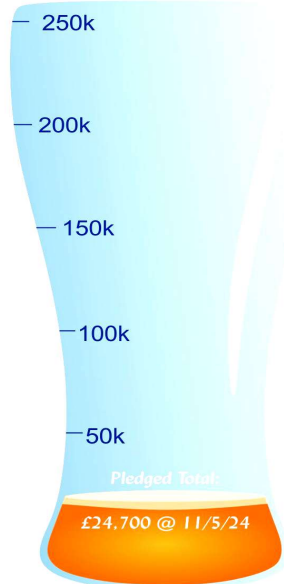
No call out fee - Estimates given

Full electrical Testing - Part P Registered - NAPIT member No. 7915

[www.kes-kneen.co.uk](http://www.kes-kneen.co.uk)

## Save the Harewood Arms

### Broadbottom Community Pub Group



We're aiming to form a Community Benefit Society to buy our local pub through a combination of government funding and community shares.

The success of our funding application hinges on our ability to show a genuine willingness and financial commitment in Broadbottom and surrounding villages to raise sufficient funds for a successful purchase.

This is an invitation to pledge your intention to buy shares and become a proud co-owner of our pub as a community asset. We're looking for pledges of between £100 and £25,000. A full share prospectus will be issued as soon as plans are in place.

Please send us a pic of your completed pledge form, or pop it in the post box on the bar in the pub, or email details of your pledge to: [communityharewood@gmail.com](mailto:communityharewood@gmail.com)

Name:	<b>Pledge:</b> I pledge to buy shares worth £ <input type="text"/> to save our community pub
Phone:	
Email:	
Address:	

## Local Businesses

# ADVERTISE

**in your local Parish Magazine!**

Very reasonable yearly or one-off rates.

Popular printed and online editions.

Please contact the editor on **07999 355 941** or email [mandpbrown@protonmail.com](mailto:mandpbrown@protonmail.com) for more information.

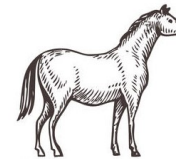


## Nu-Shu



*An independent family-run  
Shoe Shop*

**Market Avenue  
Ashton-under-Lyne**



## Grange Farm Feeds



On roundabout, end of M67 Mottram  
Tel. 0161 368 3722

For all your animal feeds and supplies from Hamster to Horse!  
Potatoes and new-laid eggs.

Opening times

Mon. 9am-5pm, Tues. Wed. Thur. Fri. 10am-4pm, Sat. 9am-4pm



## Queen Interiors



**Repairs to**  
Recliners, Settees,  
Chairs, Backs,  
Flat seats,  
Fixed upholstery

*20 years experience*

**Curtains**  
Making  
Shortening  
Mending

**Re-upholstery to**  
Conservatory suites,  
Chairs, Stools,  
Dining seats,  
Caravan covers

Tel. 07476352196

email [queen.interiors29@gmail.com](mailto:queen.interiors29@gmail.com)



# FRANK MASSEY & SON LTD

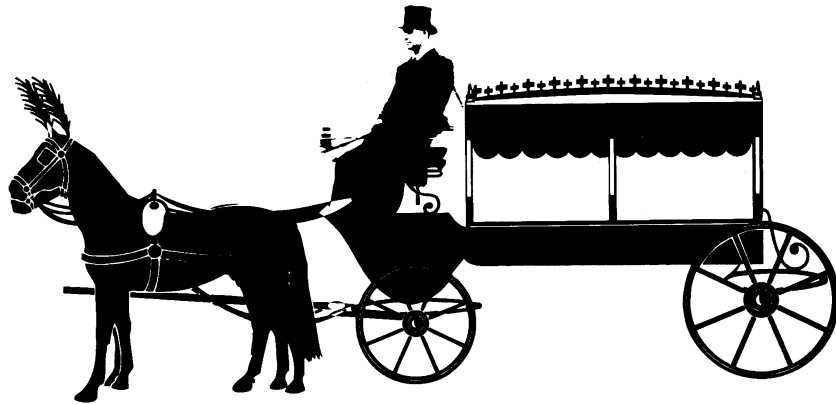
## Family Funeral Directors

49 Mottram Road, Hyde, SK14 2NN

Hyde's longest established family-run funeral directors.  
Serving Hyde, Mottram and surrounding areas since 1903.

**Pre-paid Funeral Plans with Golden Charter**

**Floral Tributes**



*24-hour Personal Care and Attention*  
*Private Chapels of Rest*

Phone:  
0161 368 2565



Mobile:  
07973 910557

[www.frankmassey.co.uk](http://www.frankmassey.co.uk)

# S. G. GILL

Roofing, Pointing & General Building  
Specialists in High Level Structural Repairs  
Domestic, Industrial, Commercial  
& Church Maintenance  
Repair, Renovation & Restoration  
U.P.V.C. Fascias & Soffits - Gutter Cleaning  
All Chimney Guards & Vents Fitted To Chimney Stacks  
Moss Cleaned From Roofs  
**Mobile: 07831 255 710**  
**07519 236 751**  
**Email: [sggillcontractors@hotmail.co.uk](mailto:sggillcontractors@hotmail.co.uk)**



## MIKE GREEN DECORATING

Friendly Helpful Service • Top Quality Work  
• Recommended by TMBC & Age UK  
For a **FREE** quote ring  
0161 330 6890 or 07833 521168



## G A R A G E D O O R S

REPAIRED  
REPLACED  
MOTORISED



FREE QUOTATION  
ALL WORK GUARANTEED  
OLD DOOR TAKEN AWAY  
NO HIGH PRESSURE SALES

SHOWROOM



Horton St, Higher Hillgate, Stockport, SK1 3LR

TEL : 0161 477 3391

[www.carringtondoors.co.uk/garagedoors](http://www.carringtondoors.co.uk/garagedoors)